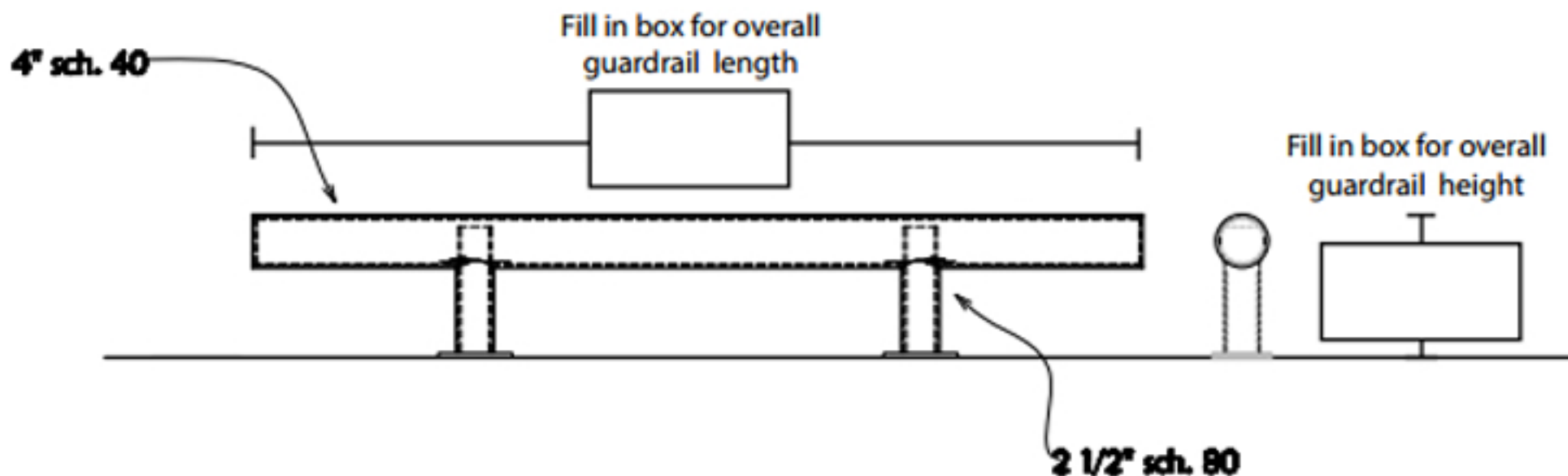
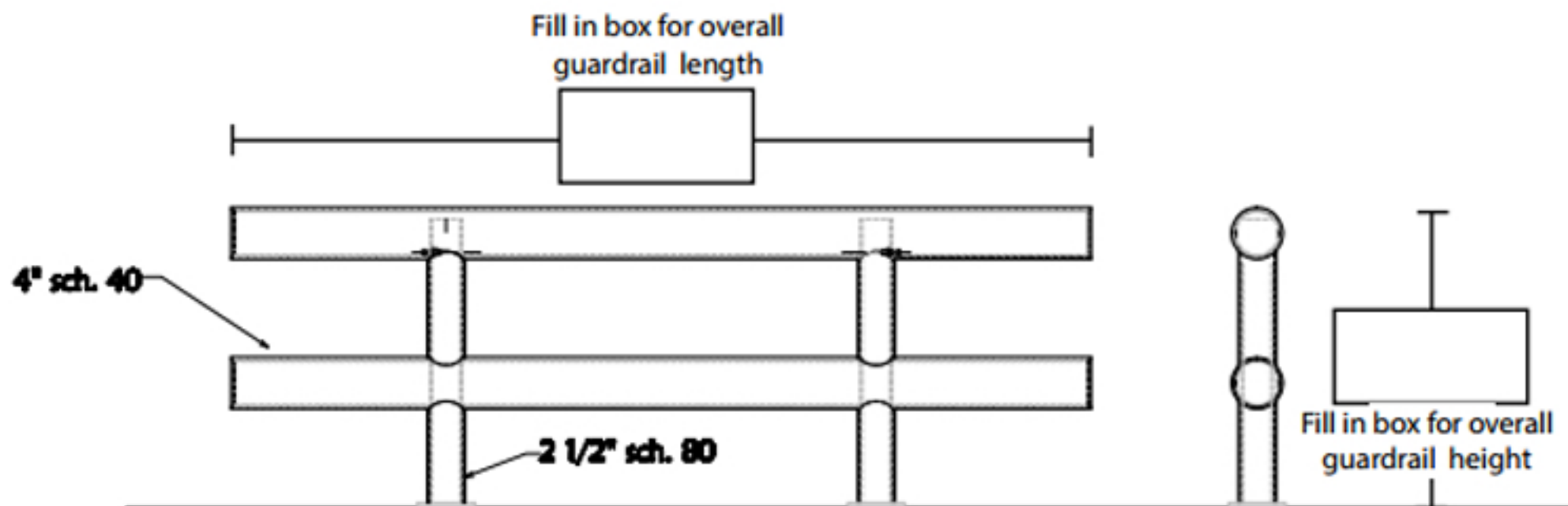


Standard Guardrail Product Specifications

One-Line



Two-Line



Guardrail Type: One-Line Two-Line (circle one)

Installation Type: Plate-Mount

Company: _____

Name: _____

Address: _____

City, State, Zip: _____

Phone: _____

Email: _____

Quantity: _____

Standard Measurements:

Length: 4'-0"	Height: 14-3/4" (One-Line)
6'-0"	27"
8'-0"	36"
10'-0"	42"

Base Plate - 1/2" x 8" x 8"

Please fax or email your product inquiry to fax #: (313) 842-7860 or info@idealshield.com

<small>THIS DRAWING AND ALL THE INFORMATION THEREON IS THE PROPERTY OF IDEAL SHIELD. IT IS CONFIDENTIAL AND MUST NOT BE MADE PUBLIC. ANY COPIES, NOW USED, TO THE DISADVANTAGE OF SAID IDEAL SHIELD AND IS SUBJECT TO RETURN ON DEMAND.</small> <small>COPYRIGHT 2003 IDEAL SHIELD</small>	NO.	REVISIONS	DATE	APPROVED	 2525 Clark St. Detroit, MI 48209	PROJECT	CUSTOMER	DESCRIPTION	QUANTITY	UNIT PRICE	TOTAL	
									Standard Guardrail			
									Quick Quote Form			