

PLATED STANDARD GUARDRAIL GATE

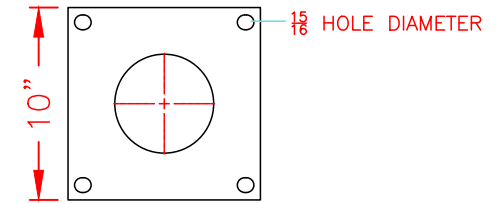
PART#: SGG-2-INSIDE LENGTH-48-PLATED

WRITE REQUIRED INSIDE CLEARANCE:
 (READ SIZE CHART BELOW)

STANDARD LENGTHS	
REQUIRED INSIDE CLEARANCE	MINIMUM INSTALL LENGTH
4'-0"	6'-9"
6'-0"	8'-9"
8'-0"	10'-9"
10'-0"	12'-9"
12'-0"	14'-9"

NOTE ADD 2'-9" FOR CUSTOM MINIMUM INSTALL LENGTH

DETAIL 1



5/8" x 10" x 10"
BASEPLATE

CI2051 HINGE CLAMP X2

4" S40 STEEL PIPE
5/4" OD PLASTIC

2.5" S80 STEEL PIPE
3-3/4" OD PLASTIC

SLIDING LOCK ASSEMBLY
(HOT DIP GALVANIZED FINISH)

1'-4" X 3/4" X 1 1/4" SQUARE TUBE

1'-4" - 2.5" SCH 40 PIPE X2

CONCRETE

5" CASTOR WHEEL

5/8" x 10" x 10"
FLANGE
DETAIL 1

MIN INSTALL LENGTH (SEE CHART ABOVE)

SPECIAL INSTRUCTIONS:

qty.

THIS DRAWING AND ALL THE INFORMATION THEREON IS THE PROPERTY OF THE IDEAL SHIELD. IS CONFIDENTIAL AND MUST NOT BE MADE PUBLIC, NOR COPIED, NOR USED, TO THE DISADVANTAGE OF SAID IDEAL SHIELD AND IS SUBJECT TO RETURN ON DEMAND.

NO.	REVISIONS	DATE	APPROVED

PROJECT

CUSTOMER

DESCRIPTION

APPROVED BY:

PLATED GOAL POST
WITH STANDARD GUARDRAIL GATE
CUSTOM

DRAWN BY:	APPROVED BY:	DATE:
D.P.		
PROJECT NO.:		SCALE:
		NA
MATERIAL:	DRAWING NO.:	
PIPE & PLASTIC		
	SHEET	OF
	1	1

***SIGNATURE REQUIRED FOR SUBMITTAL**